



# Adjustable Angle Check Valve

Mod. 55 B



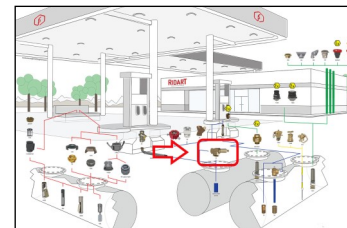
## APPLICATION



CE Ex II 3 G

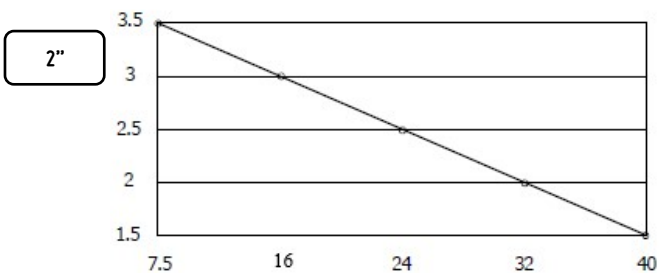
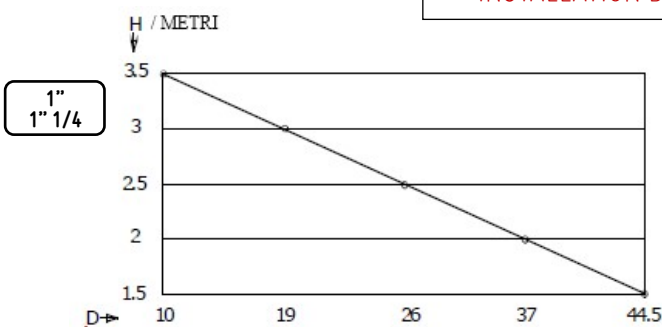
It's a Safety Device in according with Directive 2014/34/EU and harmonized standard EN ISO 13617-2.

The valve is designed to prevent siphoning of liquid from an aboveground tank to the suction pipe installed at a lower level. The valve is also provided with a pressure relief valve which opens at around 1,5 bar in case of pressure rising in the pipeline.

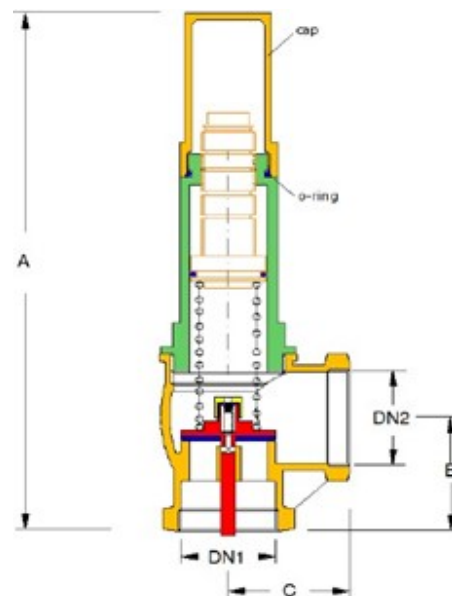
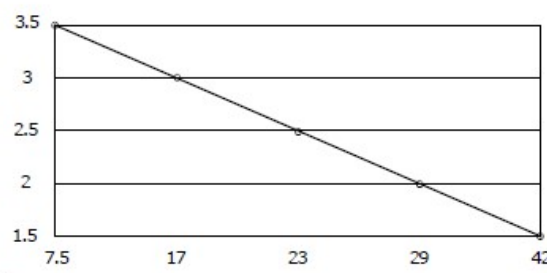


PARTS	MATERIAL
BODY	BRASS
O-RING SEAL	VITON®
SPRING	STAINLESS STEEL
MAX WORKING TEMPERATURE	- 20°C + 60°C
MAX WORKING PRESSURE	10 PN
PRESSURE RELIEF VALVE	1,5 bar

## INSTALLATION DIAGRAM



1 1/2



## DIMENSIONS

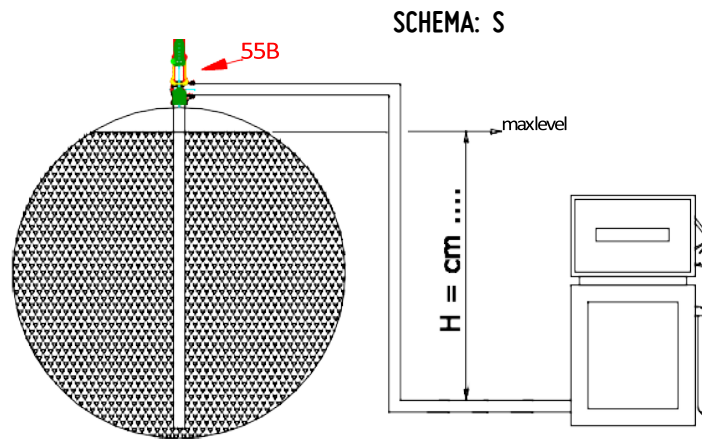
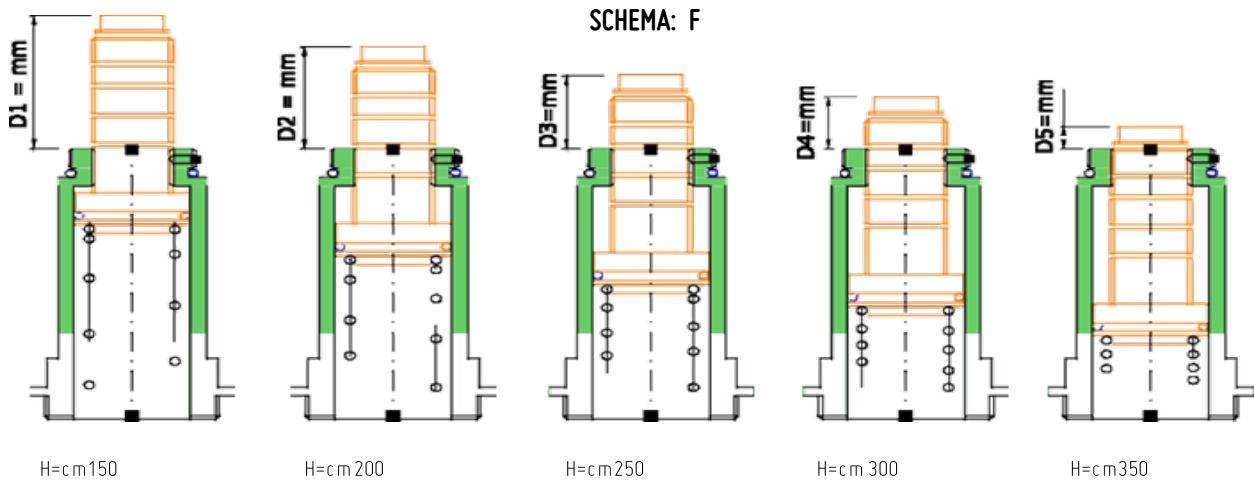
Code	DN1	DN2	A	B	C
092210	1" BSP F	1" BSP F	220	50	50
092215	1 1/4" BSP F	1 1/4" BSP F	220	50	50
092220	1 1/2" BSP F	1 1/2" BSP F	230	53	53
092225	2" BSP F	2" BSP F	260	70	70

## REGULATION PARAMETERS

Code	D1	D2	D3	D4	D5
092210	44.5	37	26	19	10
092215	44.5	37	26	19	10
092220	42	29	23	17	7.5
092225	40	32	24	16	7.5

RIDART s.r.l. via Adua, 17 - 21045 Gazzada Schianno (VA) ITALY P.IVA/C.F. IT 01454770122  
 www.ridart.it info@ridart.it +39 0332 463301

Product Certification, Declaration of Conformity, User Manual and Testing on: [www.ridart.it/support](http://www.ridart.it/support)  
 The Data and Images are not binding. We reserve the right to make changes without notice. Pressure & Flow Tolerances ±20%.



## CHEMICAL SUITABILITY

- Standard Model is for traditional fuel without additives.
- PTFE coated is a model for special fuel, non-aggressive solvents or compatible chemical products.

## INSTALLATION AND ADJUSTMENT

- The valve is installed at the highest point of the tank, normally on the manhole cover.
- The valve is set up in the factory with random parameters: the final adjustment is to be made after its fixing
- The value "D" of the diagram F corresponds to the measure requested to open the valve at certain value of the pressure that, to make it easy, is marked with grooves on the spindle. These grooves are related to the exact height H of the Schema S that shows the tank and the dispenser.
- In order to adjust the valve remove the brass cap and screw up (to increase the force) or unscrew to obtain the needed value H.
- After adjustment of the pressure value, fix the cap again not before have checked the integrity of the O-ring seal
- For correct installation follow the Directives and product User Manual.
- For custom application or maintenance write to: [quality@ridart.it](mailto:quality@ridart.it)
- Declaration of Conformity and User Manual are available on [www.ridart.it/support](http://www.ridart.it/support)

## MAINTENANCE

- Periodically check the device is necessary to remove possible dirty.
- Always replace the product after fire, deflagration, brake or damage.
- In case of tampering warranty expires and safety protection is not guaranteed.

**RIDART s.r.l.** via Adua, 17 - 21045 Gazzada Schianno (VA) ITALY P.IVA/C.F. IT 01454770122  
[www.ridart.it](http://www.ridart.it) [info@ridart.it](mailto:info@ridart.it) +39 0332 463301

Product Certification, Declaration of Conformity, User Manual and Testing on: [www.ridart.it/support](http://www.ridart.it/support)  
 The Data and Images are not binding. We reserve the right to make changes without notice. Pressure & Flow Tolerances  $\pm 20\%$ .