



Safety Vapor Stop

Mod. 93-80, 93-100, 93-100 CL



APPLICATION

It's a Safety valve in according with Directives ATEX 2014/34/EU, Technical Norm Fire Prevention 41/256 31/10/2019, d.P.R. 10/520 19/03/1955 and subsequent amendments. Vapor Stop is used to prevent any possible vapors exposure after the cap opening while a liquid drawing operation is in progress.

Vapor stop can be used in different fields of application (petrochemical, food, pharmaceutical & more).

- Valve opens and closes automatically.
- No vapor leakage
- Fast hose emptying (les than 30 seconds)

CHEMICAL SUITABILITY

- Standard model is for traditional fuel without additives.

ON REQUEST:

- "PTFE" coated model is for special fuel, non-aggressive solvents or chemical products.
- "SS" model is for aggressive solvents, acids or bases.

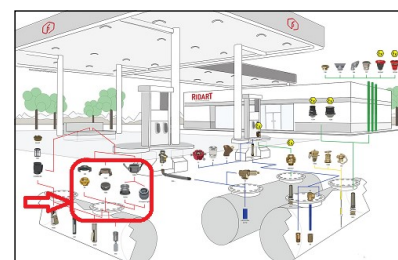
ATTENTION

The best performances allowed by the new regulation

- Max operational temperature 60°C.
- Max operational pressure 8 bar.



CE Ex II 3 G



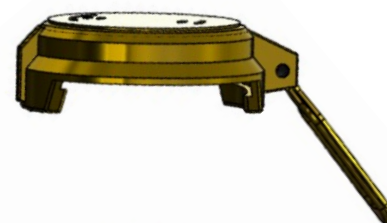
Mod. 93-100 closed



Mod. 93-100 initial opening



Mod. 93-100 opening with the flow



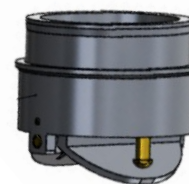
Mod. 93-80 PTFE front



Mod. 93-80 PTFE back



Mod. 93-80 PTFE open



PART	93 3"	93 3" PTFE	93 3" SS	93 4"	93 4" PTFE
CODE	93-80	93-80 PTFE	93-80 SS	93-100	93-100 PTFE
BODY	ALUMINIUM	AL PTFE COATING	STAINLESS STEEL	ALUMINIUM	AL PTFE COATING
SCREWS	STAINLESS STEEL			STAINLESS STEEL	
POPPET	ALUMINIUM	AL PTFE COATING	STAINLESS STEEL	ALUMINIUM	AL PTFE COATING
SEALS	TEFLON®	TEFLON®	TEFLON®	VITON®	TEFLON®
SUPPORT	BRASS	PTFE COATING	STAINLESS STEEL	BRASS	PTFE COATING
SPRING	STAINLESS STEEL			STAINLESS STEEL	

RIDART s.r.l. via Adua, 17 - 21045 Gazzada Schianno (VA) ITALY P.IVA/C.F. IT 01454770122

www.ridart.it info@ridart.it +39 0332 463301

Product Certification, Declaration of Conformity, User Manual and Testing on: www.ridart.it/support

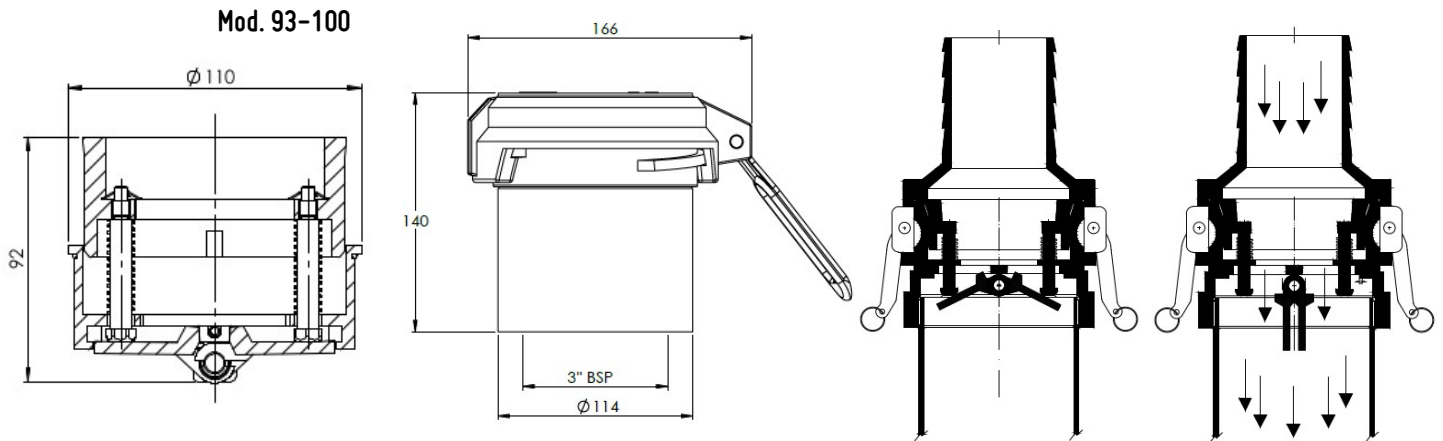
The Data and Images are not binding. We reserve the right to make changes without notice. Pressure & Flow Tolerances ±20%.

INSTALLATION

- Protection System is unidirectional, for vertical or horizontal installation.
- For correct installation follow the Directives and product User Manual.
- For custom application or maintenance write to: quality@ridart.it
- Declaration of Conformity and User Manual are available on:

MAINTENANCE

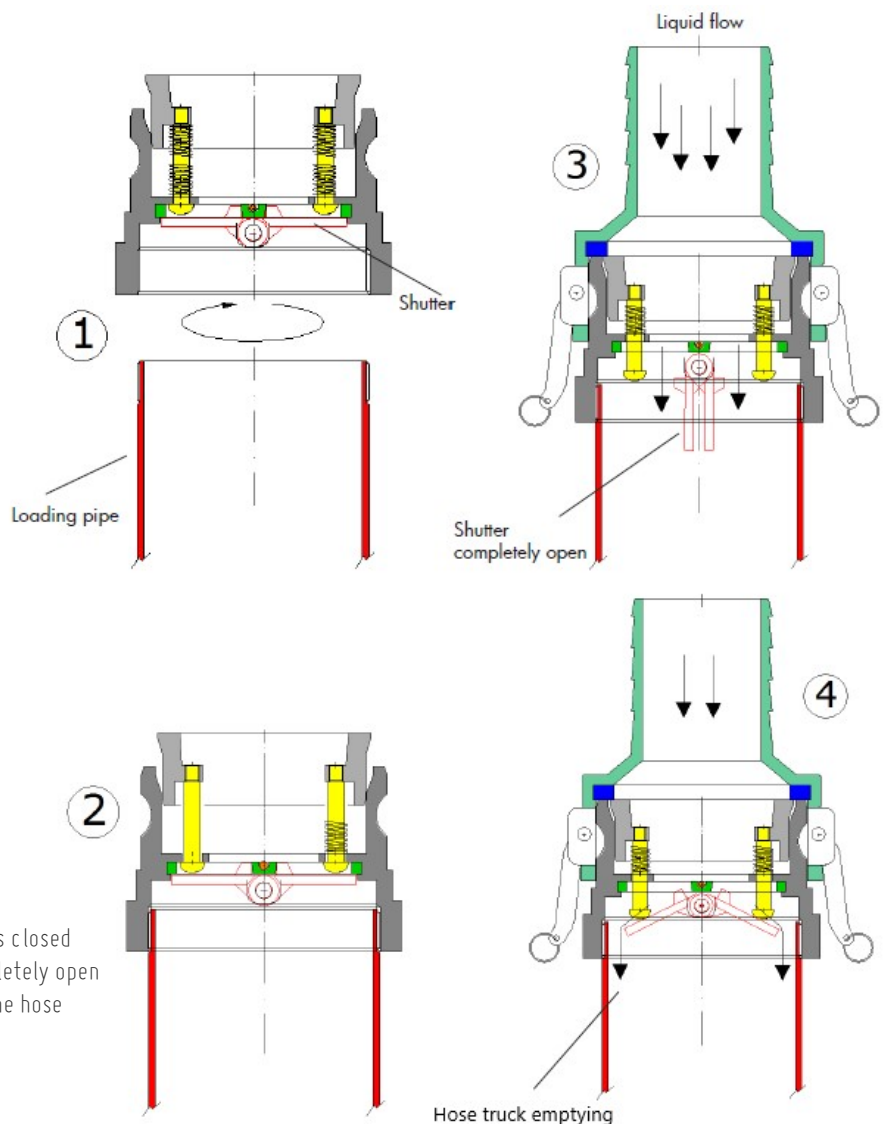
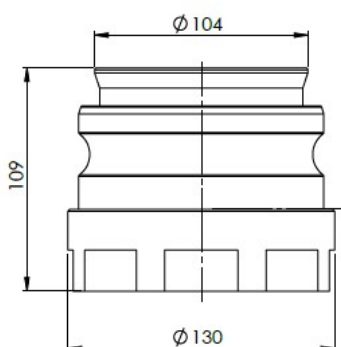
- Periodically check the device is necessary to remove possible dirty, nests or insects.
- Always replace the product after fire or deflagration.
- In case of tampering warranty expires and safety protection is not guaranteed.



VAPOR TIGHT CAMLOCK CONNECTION 93-100 CL



Mod. 93-100 CL
4" F bsp x 4" cam-lock



INSTRUCTIONS:

1. Screw the coupling on the loading pipe
2. Without connection the shutter of the coupling is closed
3. During the loading operation the shutter is completely open
4. Once filling is completed, the remained liquid in the hose can be fastly drained