

GBMY3806M2 1.5-inch sampling, vent or drain unit



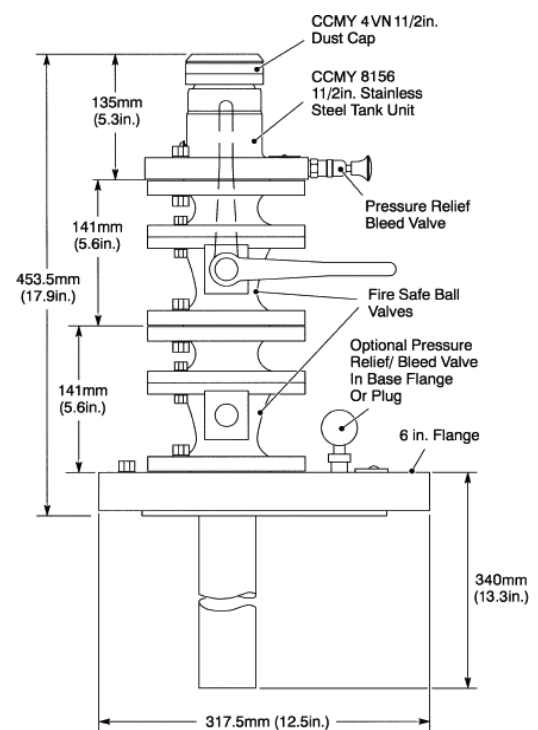
01 Key Features

- Fits into standard 18-inch pit externals with 6-inch ANSI class 300 flange
- Incorporates two 1.5-inch fire safe ball valves for extra security
- 1.5-inch stainless steel tank unit (adaptor)
- Base flange nickel plate to DEF STAN 03-05
- Accepts standard 1.5-inch hose unit (coupler) CCMY120, CCMY6153, CCMY8153
- Test Pressure 41 bar (600 psi)
- Max working pressure 19 bar (275 psi)
- Option of pre-fitted pipe in draining

02 Key Specification & Dimensions

Systems as follows

- Being fitted with a standard 6-inch ANSI 300 (BS 1560) flange it can be installed in standard hydrant pit externals. Typically GBMY5050M2-L
- Sampling - installed at a convenient point on a riser from the main hydrant line.
- Venting - installed at a high point in the hydrant line.
- Draining - Installed at a low point in the hydrant line (counter bore in flange for welding drain tube).



GBMY3806M2 unit is used in many airport hydrant systems

GBMY3806M2 1.5-inch sampling, vent or drain unit

03 Operation

Operating procedure

1. Ensure upper valve is fully closed
2. Vent tank unit by pulling knob of pressure relief/bleed valve
3. Remove blanking cap
4. Connect 1.5-inch hose unit to tank unit
5. Open upper valve
6. Take required sample (or vent or drain)
7. Fully close upper valve
8. Uncouple hose unit
9. Replace blanking cap

Important notes

- a. Only one operating handle is supplied for fire safe ball valve. The lower valve is left open at all times unless the upper valve is to be removed for servicing.
- b. Upper valve must be fully close before operating pressure relief/bleed valve.
- c. Upper valve must always be closed when coupling or uncoupling 1.5-inch hose unit (CCMY120, CCMY6153, CCMY8153)

04 Ordering information

When ordering please state whether one or two bleed valves are required.

GBMY 3806M2 selector

GBMY3806M2-1	1.5-inch unit with single bleed valve
GBMY3806M2-1A	As above with 1.5-inch seamless pipe to API SL grade B (40S)
GBMY3806M2-2	1.5-inch unit with double bleed valve
GBMY3806M2-3	No coupler fitted, single bleed valve
GBMY3806M2-4	No coupler fitted double bleed valves and single fire safe ball valve
GBMY3806M2-5	1.5 inch unit with single bleed valves and single fire safe ball valve
GBMY3806M2-6	1.5 inch unit with single bleed valve, stainless steel version