



# Overfill prevention device

Mod. 445S



## APPLICATION

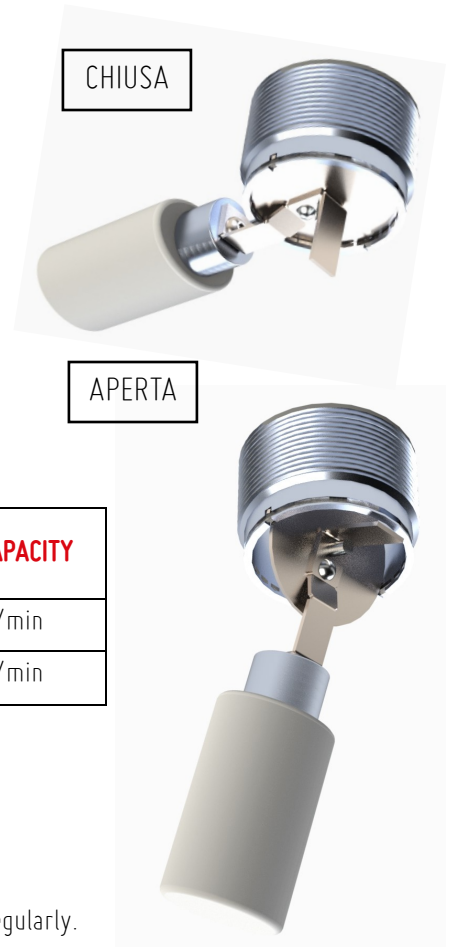
The Overfill prevention valve 445S model is a safety device designed to prevent overfill of liquid from an aboveground and ground tank to the charging pipe installed on the tank.

## FEATURES

- Gravity filling
- Supervision is required
- Fast drain hose emptying
- Direct filling
- Maximum fuel storage capacity
- No risk of fire or fuel leaking
- Easy installation

## CHEMICAL SUITABILITY

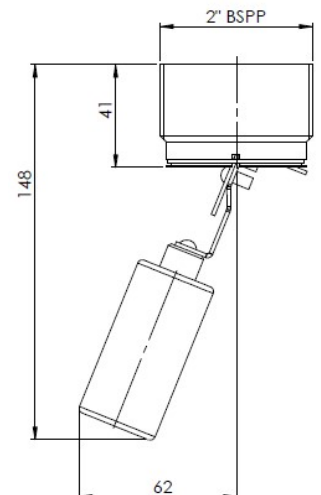
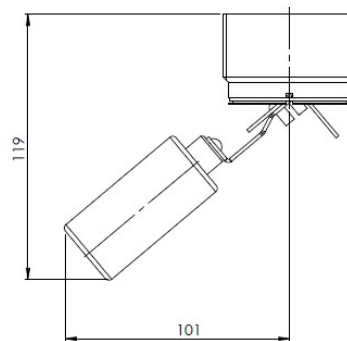
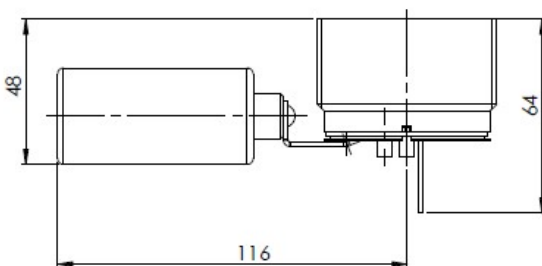
- Standard Model is for traditional fuel without additives.
- Stainless Steel is a model for special fuel, aggressive solvents or compatible chemical products.



COD.	BODY	FLOATING	THREAD	LOADING CAPACITY
445S-50M	ALUMINIUM	PPHD	2" BSPP M	25/30 l/min
445S-50M-SS	STAINLESS STEEL	PPHD	2" BSPP M	25/30 l/min

## ATTENTION

- The loading process requires supervision of an operator
- Dirty particles can damage moving components and cause malfunctions, check the valve regularly.



## MAINTENANCE

- Periodically check the device is necessary to remove possible dirty.
- The overfill prevention valve must be properly stored, handled and kept in good condition to prevent the entry of particles or the deposit of dust in the moving parts
- In case of tampering warranty expires and safety protection is not guaranteed.

RIDART s.r.l. via Adua, 17 - 21045 Gazzada Schianno (VA) ITALY P.IVA/C.F. IT 01454770122

www.ridart.it info@ridart.it +39 0332 463301

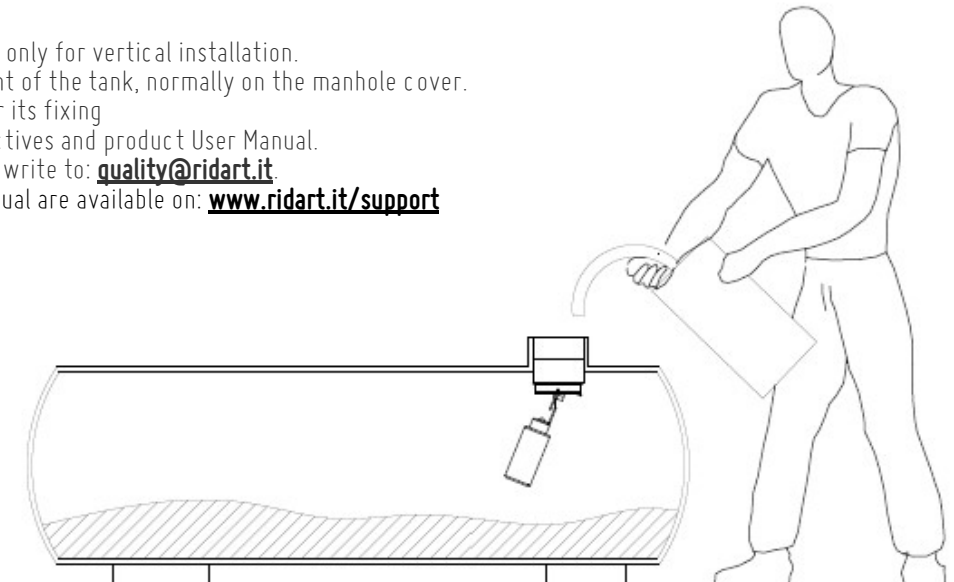
Product Certification, Declaration of Conformity, User Manual and Testing on: [www.ridart.it/support](http://www.ridart.it/support)

The Data and Images are not binding. We reserve the right to make changes without notice. Pressure & Flow Tolerances  $\pm 20\%$ .

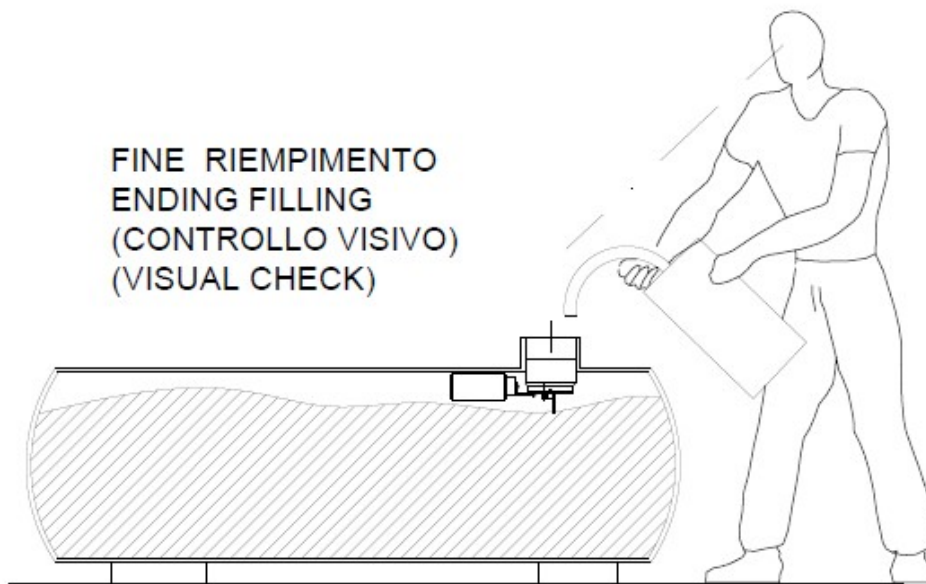
## INSTALLATION

- Protection System is unidirectional and only for vertical installation.
- The valve is installed at the highest point of the tank, normally on the manhole cover.
- The final adjustment is to be made after its fixing
- For correct installation follow the Directives and product User Manual.
- For custom application or maintenance write to: [quality@ridart.it](mailto:quality@ridart.it)
- Declaration of Conformity and User Manual are available on: [www.ridart.it/support](http://www.ridart.it/support)

INIZIO RIEMPIMENTO  
STARTING FILLING



FINE RIEMPIMENTO  
ENDING FILLING  
(CONTROLLO VISIVO)  
(VISUAL CHECK)



To choose the correct overfilling valve, scan QRcode and fill in the form:



## YOU MAY ALSO BE INTERESTED IN:

CODE	DESCRIPTION	
442-80 AL	Overfill prevention valve 3" Mod. 442	
442B-100 AL	Overfill prevention valve 4" Mod. 442B	
442S-80 AL	Overfill prevention valve Short 3" Mod. 442S	
442OR-80 AL	Overfill prevention valve horizontal 3" Mod. 442R	

RIDART s.r.l. via Adua, 17 - 21045 Gazzada Schianno (VA) ITALY P.IVA/C.F. IT 01454770122  
www.ridart.it info@ridart.it +39 0332 463301

Product Certification, Declaration of Conformity, User Manual and Testing on: [www.ridart.it/support](http://www.ridart.it/support)  
The Data and Images are not binding. We reserve the right to make changes without notice. Pressure & Flow Tolerances  $\pm 20\%$ .